

Conflict Minerals Management (CMM)



Why You Need CSRware's CMM Software

1. Mitigation - enhance supplier transparency to reduced supply chain disruption risk
2. Selection - drive supplier selection excellence using conflict mineral criteria added to the RFI, RFQ & RFP process
3. Risk - identify smelters / refiners as compliant or non-compliant
4. Compliance - meet customer requests for company level Conflict Minerals Reporting Template (CMRT) and SEC Dodd-Frank filings

Who We Are

CSRware® is a cloud-based software platform that provides a suite of **Corporate Social Responsibility software** products powering business to meet a higher standard of accountability and transparency solving society's most challenging environmental, social and governance challenges. With CSRware, you can generate immediate insights into supply chain performance, risk mitigation, being audit ready, and ensuring business continuity by collecting, analyzing and making information digestible for the entire value chain to succeed.

How We Extend NetSuite

With the CSRware RSC SuiteApp integration, NetSuite customers can auto-populate supplier data between NetSuite and CSRware then view results within the NetSuite Supplier Network Portal simplifying information required for our customer to report to their business partners to win RFP's, generate brand loyalty and offering products with confidence their suppliers are in compliance with conflict minerals SEC rules through the Dodd-Frank Act sourced in conflict regions of the world.

Features

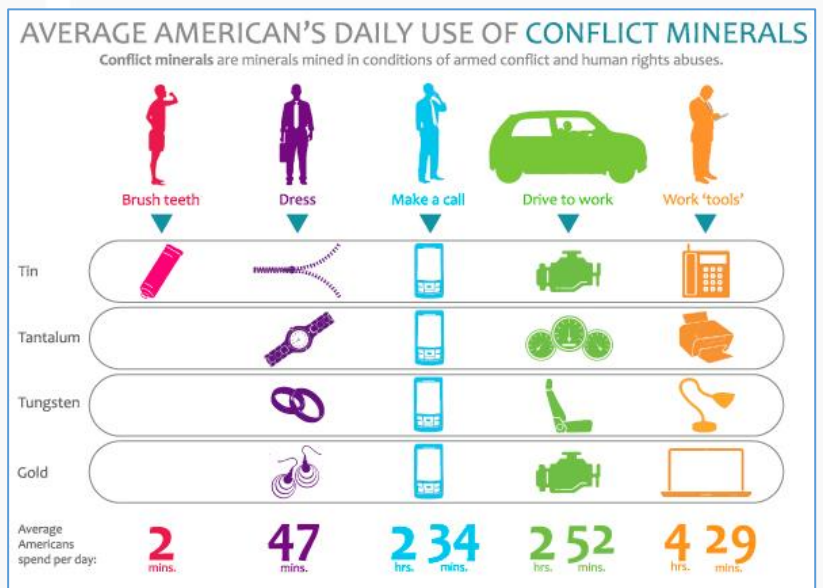
- Adherence to SEC Form SD Filings
- Classify smelters as conformant or non-compliant
- Integrate audits into RFI, RFP process
- Ability to import Excel CMRT files
- Comprehensive analytics through dashboards
- Identify & mitigate risk using risk assessments
- Generate company-level reports for customers
- Drive corrective actions to avoid future risk

Benefits

1. Risk Mitigation - supplier disclosure of mineral / metal sourcing to reduce risk of a single point of failure or supply chain disruption
2. Compliance - classify smelters as conformant or noncompliant
3. Evaluation - analyze results of Tin, Tantalum, Tungsten and Gold sourcing and downstream smelters / refiners being used - advanced analytics and supplier transparency and accountability

Our Solution

CSRware Conflict Minerals Management (CMM) provides software to manage responsible sourcing of minerals across the supply chain. CMM ensure companies are in compliance with SEC rules, prepared for due diligence, reporting and compliance. CMM is aligned with the Responsible Minerals Initiatives (RMI) and maintains version control for Conflict Minerals Report Templates (CMRT). CMM matches smelter data against the RMI smelter database to ensure smelters or refiners are found to be conformant.



NetSuite and CSRware streamline supplier accountability and transparency to address vendor risk management