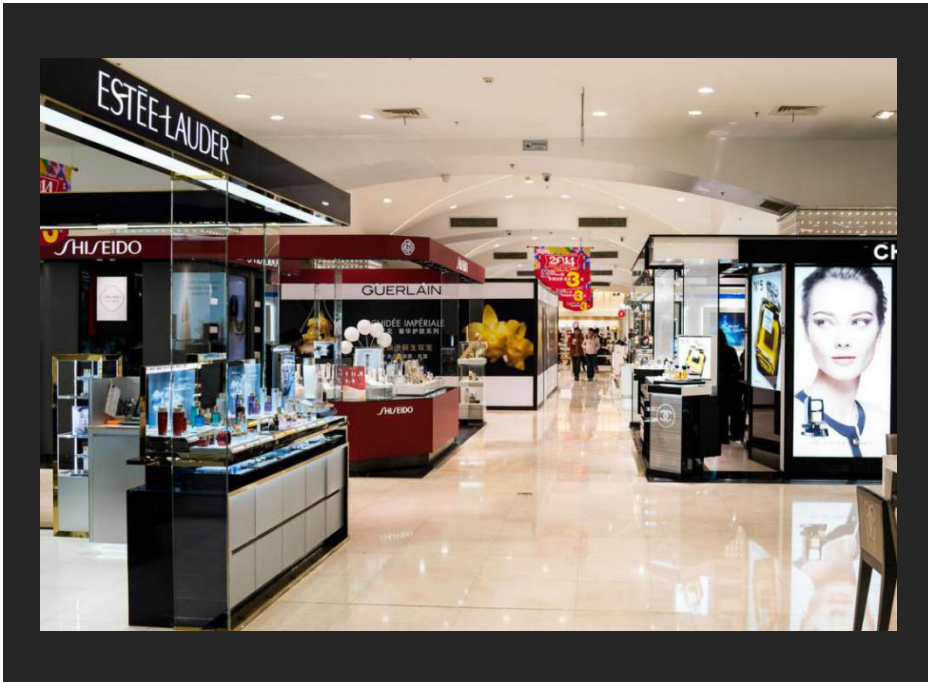




## LED PostAir Pro



- 35mm thickness: ● Outer frame size: 572x1902x35mm
- 40mm ultra-narrow side design ● Display size: 560x1890mm
- All pre-maintenance methods ● Module size: 280x210mm
- Aluminum alloy integral border ● Pixel spacing: 1.9,2.5mm
- Hidden automatic closing brace ● Display mode: synchronous/asynchronous system
- Signal output: HDMI
- Cross-platform operation: Windows/IOS/Android
- Control mode: network/WiFi / 3G/usb drive
- Brightness: 1200 or higher nit
- Super light design, weight: 32kg



### HD Experience

- 1.9,2.5mm pitch HD display quality
- 3840Hz high refresh rate
- 1200nits high brightness, 3 times as LCD display
- 160 degrees wide viewing angle
- More realistic color reproduction
- Compared with the indoor LCD display, poster has more advantages over it. Such as higher brightness, ultra-thin, low power consumption and perfect visual effects, etc. It can show perfectly even in bright places.

Synchronous / asynchronous is compatible, can plug and play also can conduct cross-platform operation

- Can play anywhere at anytime
- Can play real-time video data through Internet
- Can control the display from cross-platform by Windows, IOS, and Android device.
- The stored items can be updated and send to insert media player to achieve Asynchronous broadcasting

### Integrated network management

- Play video by connecting WiFi, USB or HDMI
- Multi-screen set together, unified playback and management
- After networking, you can push and monitor the global displays



Mirror mode



More screen mode



Stand-alone mode



More screen cascade



### Multiple installation method

- Support hoisting, wall-mounted installation, tilt installation, base installation, bracing installation, and other installation methods



Floor-standing



lifting



Titled installation



Creative tilted installation

### Multiple applications

Suitable for shopping malls, airports, stations, canteens, restaurants and other occasions, can be used as:

- advertising platform emergency notification, real-time information release
- emergency information, instant message release
- Shopping guide information, equipped with service information dissemination platform
- publicity platform, brand demonstration window



### packing and transportation

- canvas box (with reflective strip) package: suitable for a small number of screen body, short-distance handling
- wooden case package: suitable for long fixed installation screen body
- flight case package: for long rental screen body, short-distance handling



**Parameter:**

MODEL		LED PostAir 1.9	LED PostAir 2.5
<b>LAMP</b>	LED Type	SMD(1010)	SMD(2020)
<b>MODULE</b>	Pixel pitch	1.944mm	2.5mm
	LED module size(mm)	280 × 210	
	Resolution(W × H)	144 × 108	112 × 84
	LED driving method	1/27 scan	1/28 scan
<b>CABINET</b>	LED module layout(W × H)	2 × 9	
	Display area	1.06m <sup>2</sup>	
	Display Size	560 × 1890mm	
	Cabinet size(mm)	572 × 1902 × 35	
	Resolution(W × H)	288 × 972	224 × 756
	Net. weight/set	32kg	
	Ingress Protection	Front IP40/Rear IP40	
	Power	AC 240/100 ± 10%	
	Serviceability	Front service	
<b>DISPLAY</b>	Max.Power consumption	600W	750W
	Avg.Power consumption	200W	250W
	Viewing Angle(H/V)	160° /160°	
	Brightness	1200~1500 cd/m <sup>2</sup>	1000cd/m <sup>2</sup>
	Pixel density(pixel/m <sup>2</sup> )	169344	279936
	Contrast ratio	4000:1	
	Temperature/ Humidity	-10° C to +40° C; 10% to 90%	
	Lifetime(50% brightness)	80,000hours	
	Processing	16bit	
	Refresh rate	≥2880Hz	
	Frame rate	60fps	
	Brightness level	Manually/Auto/Programmable	