

**1020' Temporary Tunnel String Light - 102 LED Work Lamps - 277V - 12/4 SJTW Backbone - L22-20 Twist**

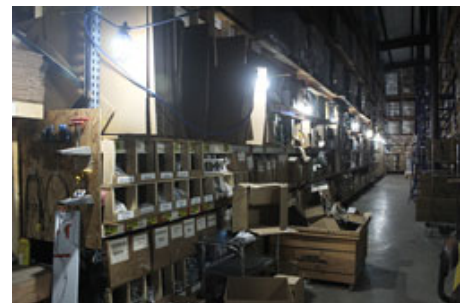
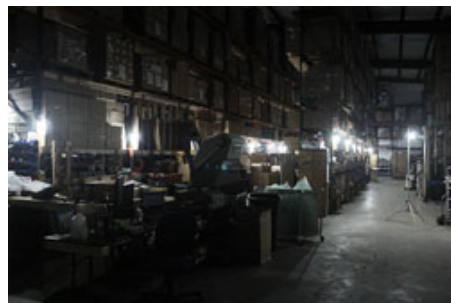
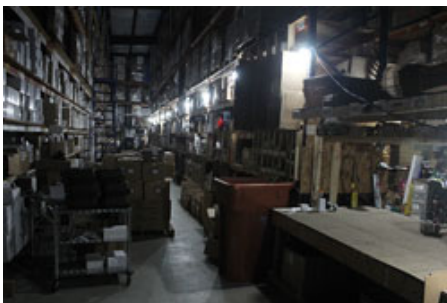
Part #: [WAL-SL-102-LED-12.4-TWP-277V](#)



**Made in the USA**

The Larson Electronics WAL-SL-102-LED-12.4-TWP-277V Temporary Tunnel LED Lighting String Light System is designed for high output illumination and daisy chain connections across a total length of 1026` away from the power source. The 10 watt LED lamps on this this work site light set provide more and higher quality light than 100 wattage incandescent lights while creating less heat and using less power. This LED light stringer operates on 277V AC and provides operators with a temporary work light solution for tunnels and underpasses up to half a mile in length.

This temporary tunnel string light consists of 102 industrial grade LED lamps with 10` of 12/4 SJTW cable between each unit, 3` input and 3` output whips, stretching a total of 1026` in length. This temporary LED string light is connected to a 277V power source via an integrated 3` line-in cable terminated in a L22-20P cord cap. Each globe light is equipped with a high output LED bulb which delivers more light output than a 100 watt incandescent. The 10 watt LED bulb draws 10% the electrical power of a standard 100 watt bulb, making it suitable for standard voltage and low voltage applications. Each LED light screws into a molded E26 lamp socket and the bulb is enclosed in a bird cage style plastic guard. 102 high output A19 style LED lamps producing 1050 lumens per lamp provide a total of 107,00 lumens of bright white illumination. Each lamp housing is constructed from light weight aluminum, and fitted with an impact and shatter resistant polycarbonate diffuser. These LED light bulbs provide additional safety measures and time savings, given the low heat production and that it does not require replacing for 50,000 hours. Since the LED bulb uses solid state technology, the vibration (dropping, etc.) that degrades conventional incandescent bulbs is not an issue with these LED bulbs.

[Click Photo to Enlarge](#)[Click Photo to Enlarge](#)[Click Photo to Enlarge](#)

Unlike the glass tube design of traditional fluorescent lamps, these LED T-Style lamps have no filaments or fragile housings to break during operation. Instead of using a combination of gases to produce light, light emitting diodes (LEDs) use semi-conductive materials that illuminate when electric current applied and emitting light. The LED assembly is mounted to the extruded aluminum, with a polycarbonate lens protecting the LEDs. With LED lights, there is no warm up time or cool down time before re-striking and provide instant illumination when powered on, adding to the reliability of LED technology. By nature, LED light sources run significantly cooler than fluorescent lamps, reducing the chance of accidental burns and increased temperatures due to heat emissions. This solid state design of light emitting diodes provides a more reliable,

stable, durable, and energy efficient light source over traditional fluorescent lighting.

Safety within the workplace is another benefit of LED work lights and temporary lighting. All light sources produce heat. With traditional work lamps, such as incandescent and halogen light sources, the lamp reaches high surface temperatures. These surface temperatures introduce a burn risk to anyone that allows prolonged skin contact with the light source, as well as a fire hazard if a flammable material is accidentally set too close to the light source for an extended period of time. While LED fixtures do still produce heat, they are designed with heat sinks to properly disperse the heat. Each LED bulb is engineered to disperse and expel this heat quickly and efficiently, keeping the lamp cooler than traditional light sources. This LED work light operates at a lower surface temperature than a comparable model with traditional light source, and thus does not present a significant burn risk if an operator or bystander accidentally brushed up against an exposed lamp, and reduce the fire hazard should they fixture accidentally come in contact with a flammable material for a short period of time. This significantly increases the safety within the work environment.

Each light has a plastic mesh guard enclosure that provides protection for the enclosed bulb and a hook eyelet that allows operators to hang these tasks lights overhead. Utilizing energy efficient LED lamps, operators are able to provide more light coverage from the same amp draw, or lower the amp draw using the same amount LED lamps as incandescent. Each LED trouble light has an effective range that approximately covers a 5-8` radius with 10-15 foot candles of light. Unlike fragile incandescent and compact fluorescent lamps that are made from glass, these LED bulbs are extremely durable and can live up to the abuse of harsh working conditions. With a lamp life of 50,000 hours, operators are not constantly having to replace burnt out or broken lamps, reducing down time and lowering the amount of spare lamps required at the job site. This string light is broken into five sections spanning 510` each, for a combined total of 2,550` in length. Each section is terminated in a male L22-20P twist lock plug on one end and a female L22-20C twist connector on the other end. The independent sections allow operators to deploy shorter runs as needed as the job progresses, and helps with cable management during installation and storage. Alternating hots along between each daisy chained section allows this string light to span nearly half a mile in length. Previously, it would have been unrealistic to have a complete assembly reaching this length from a single point of power.

**Stringer Energy Consumption Comparison**

	<u>Incandescent</u>	<u>Halogen</u>	<u>LED</u>
Wattage (Single Lamp)	100 watts	26 watts	10 watts
Wattage (10 Stringers Total)	25,500 watts	6,630 watts	1,020 watts
Amp Draw @ 277V AC	165.71 amps	82.86 amps	3.68 amps
Operation cost per day (12hs/day @ 12c/kWh)	\$36.72	\$9.55	\$1.47
Operation cost per month (12hs/day @ 12c/kWh)	\$1,101.60	\$286.42	\$44.06
Operation cost per year (12hs/day @ 12c/kWh)	\$13,402.8	\$3,348.23	\$528.77

**Each LED string light assembly has the potential to \$12,000\* per year in electricity alone, not including maintenance costs, operational downtime, reduced productivity, HVAC loads, or carbon footprint. This results in short return on investment (ROI) timeframes.**

\*Assumes operating for 12 hours a day, 7 days a week, at \$0.12/kWh. Comparison made between 100 watt incandescent rough service lamps and LED lamps. Energy savings will vary depending on operational time, energy rate, and lamps outfitted in alternative fixtures compared to the LED string light.

**Please note:** This string light is not capable of supporting 100 watt lamps nor 26 watt lamps due to cable restriction and overloading the cable. These comparison charts are for references only. To be able to achieve the same results with traditional light sources, higher amp capacity cable would be required or shorter runs per string light assembly. To be able to achieve the same distance, multiple power sources would be required for the total length of the area that requires being illuminated.

Also note that for incandescent lamps, due to voltage loss over distance, the light from start to end of the single string light, with the lamps at the tail end of the stringer being nearly half the light output as the ones at the head end of the string light by the power source. For compact fluorescent lamps, this would require bulbs with internal ballasts that are universal voltage and capable of auto sensing voltage and adjusting accordingly. Otherwise the lamps will stop operating properly or fail prematurely after a certain distance due to voltage drop. The LED string lights from Larson Electronics have been designed to overcome the above difficulties and faults with traditional lighting. This allows operators to run a single strand of string lights within the work area and span long distances from a single power source and work around voltage drop without sacrificing light output. This feat would not be possible with above traditional light sources without increasing cable size, weight of the unit, number of power sources required to span the same distance, while providing more light output within the work space.

These LED lamps are suitable for wet areas, extremely long lived, resistant to damage from impacts and vibrations, and consume far less energy than standard lamps. This tunnel string light is configured to operate with 277 volt electrical current. Alternative voltage options are available. Each section is equipped with a L22-20P male and L22-20C female cord cap. The LED lamps provide more and better quality illumination than 100 watt incandescent string lights without the high heat and fragile glass construction of traditional lamps. With the low energy requirements of LED lamps, 1020` long assembly units are now physically possible.

#### Lamp Features

1. 10 Watt LED Lamps
2. 102 Lamps for a total of 107,100 watts spanning 1026` in length.
3. 1,050 lumens per lamp for a total of 107,100 lumens.
4. High output LED lamps provide bright white illumination and better color rendering compared to the dingy yellow tint of traditional incandescent lamps.
5. Outdoor approved equipment.
6. No ballast, no flickering, instant on illumination
7. Cage plastic Guards for added protection
8. 277V AC Operation
9. Durable solid state LED construction resists damage from impacts and vibrations.
10. Hanging hook for hanging and hands free operation.
11. 10` of 12/4 SJTW cable between each light.
12. 1026` span of temporary LED work lighting.
13. Stringer broken into (2) sections of 510` with
14. Energy efficient alternative to incandescent and compact fluorescent temporary string lights.

#### Specifications / Additional Information

##### WAL-SL-102-LED-12.4-TWP-277V String Lights

**Lamp Type:** LED

**Lamp Quantity:** 102

**Lamp Watts:** 10 watts

**Total Watts:** 1020 Watts

**Lumens:** 107,100 (1050 per lamp)

**Voltage:** 277V AC 50/60 Hz

**Total Length:** 1026`

**Length per Section:** 510`

**Wiring:** 10` 12/4 SJTW Cable Per Unit, 3` Whips

**Cord Caps:** L22-20P and L22-20C Twist Lock Cord Caps

**Mounting:** Eyelet for hook mounting

**Shipping Dimensions:** 48" x 40" x 40"

**Shipping Weight:** 900 lbs

[Scroll Down to Purchase-](#)

[This product does not qualify for free shipping.](#)

#### Superior LED Benefits

1. 50,000 hour lifespan.
2. Can SAVE 50% or more on energy.
3. Qualifies retrofit projects for financial incentives, including utility rebates, tax credits and energy loan programs.
4. Reduces energy use and prolongs life-spans of peripheral cooling units (A/C, refrigeration)
5. 100% recyclable.
6. No toxins-lead, mercury.
7. No UV light, infrared radiation or CO2 emissions.
8. Qualifies buildings for LEED and other sustainable business certifications.
9. Bright, even light maintains consistent color over time.
10. Instant on/off – No flickering, delays or buzzing.
11. Very good color rendering.
12. Vibration/impact resistant.
13. Significantly cooler operation.
14. Less frequent outages, higher output improves workplace safety.

#### Features

Lower Amp Draw

Wet Area Approved

High Output 10 Watt LED Lamps

1026` Total Length - Spanning Half Mile

510` per Section - Two Independent Sections

107,100 Lumens of Total Illumination

#### Special Orders- Requirements

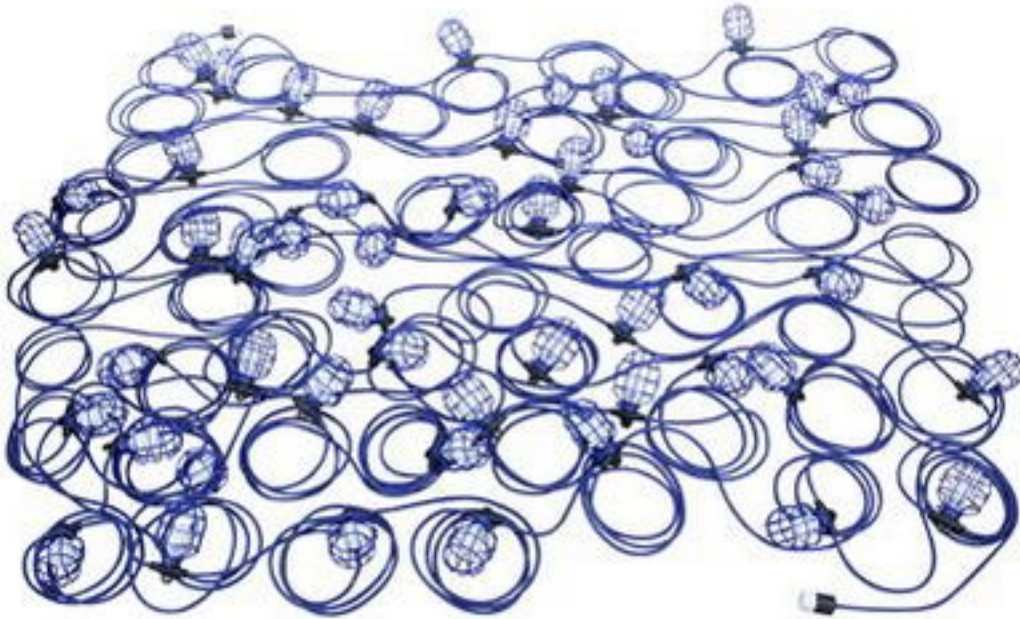
Contact us for special requirements

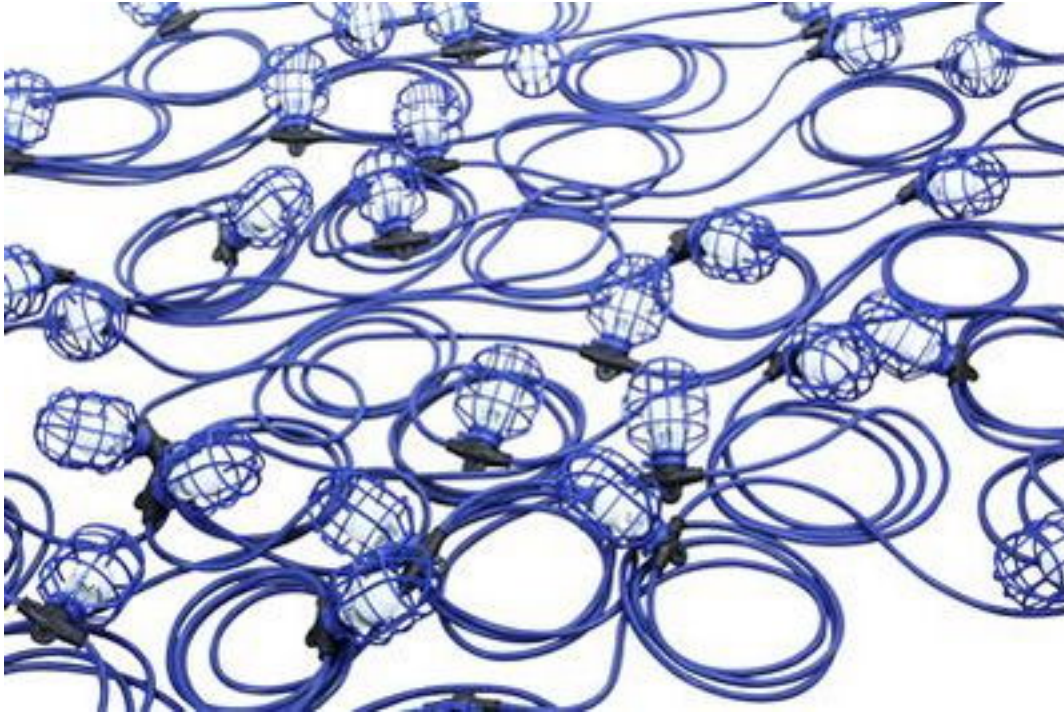
**Toll Free:** 1-800-369-6671

**Intl:** 1-903-498-3363

**E-mail:** sales@larsonelectronics.com

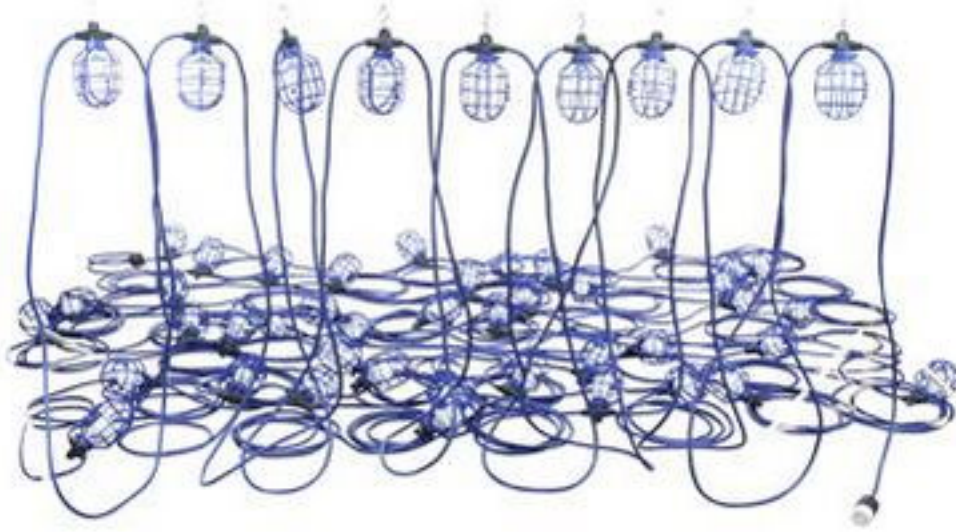
Part #: WAL-SL-102-LED-12.4-TWP-277V (152702)











Links (Click on the below items to view):

- [Hi-Res Image 1 - Mega Stringer LED Temporary Tunnel String Lights](#)
- [Hi-Res Image 2 Mega Stringer LED Temporary Tunnel String Lights](#)
- [Hi-Res Image 3 Mega Stringer LED Temporary Tunnel String Lights](#)
- [Hi-Res Image 4- Mega Stringer LED Temporary Tunnel String Lights](#)
- [Hi-Res Image 5 - Mega Stringer LED Temporary Tunnel String Lights](#)
- [Hi-Res Image 6 - Mega Stringer LED Temporary Tunnel String Lights](#)
- [Hi-Res Image 7 Mega Stringer LED Temporary Tunnel String Lights](#)
- [Hi-Res Image 8 - Mega Stringer LED Temporary Tunnel String Lights](#)
- [Hi-Res Image 9 - Mega Stringer LED Temporary Tunnel String Lights](#)
- [Hi-Res Image 10 - Mega Stringer LED Temporary Tunnel String Lights](#)