

# MODULAR MOBILIZATION COALITION

Volumetric Building Companies (VBC) in partnership with the Modular Building Institute (MBI) has mobilized a coalition of **15+ small business, modular construction companies** with a nationwide network of **25+ factories**, a collective **4,000+ employees**, and **combined annual revenue of over \$500MM** to build a standardized Supplemental Care Unit (SCU). SCUs are intelligently designed dual purpose shelters addressing the immediate need for quarantine, patient recovery, and care staff resting rooms that are able to be moved from city to city as the virus peaks and wanes.

Single point of contact and oversight **facilitates the manufacturing, transportation, and installation of 2,000 beds in 3 weeks, 10,000 beds in 6 weeks, and 25,000 beds in 10 weeks** nationwide. The SCU plan complies with USACE A2HC general specifications, FGI Guidelines for Assisted Living (I-1) and further downstream can be re-purposed and stacked in to 3-4 story permanent supportive housing structures.



Starting at: **\$25K/BED**

**+** **Small Business Coalition**  
Nationwide Network of Factories **=**

<b>2,000 BEDS</b>	<b>3 weeks</b>
<b>10,000 BEDS</b>	<b>6 weeks</b>
<b>25,000 BEDS</b>	<b>10 weeks</b>

12 in Northeast U.S.  
3 in Southeast U.S.  
6 in Midwest U.S.  
3 in Southwest U.S.  
2 in Northwest U.S.

## Key Aspects:

1. **Small business coalition** of modular factories building the same product (SCU) for 10X impact.
2. **Single point of contact** for purchase of SCUs made by coalition coordinated factories.
3. A **standardized product approach** is efficient, simplifies manufacturing and on-site logistics.
4. Type V construction, **FGI compliant** with healthcare standards and designed to I-1 occupancy under the IBC (with **future compliance with R-1**) - contain 5 care rooms + 2 bathrooms.
5. **4,000+** families back to work as factories and support industries expand staffing to manufacture and deliver SCUs.
6. Post-pandemic, SCUs will be **repurposed as permanent (stackable) supportive housing**.

## Requirements for Mobilization and Expected Results:

- Approve and fund approximately **\$90M** for 20+ factories to begin scale-up for production.
- Estimate **2-3 weeks** from the end of SCU pilot for initial 1,500 beds to reach affected locations.
- Estimated capacity of **4,000-6,000 SCU patient beds/week** at full national scale-up.

## Supporters



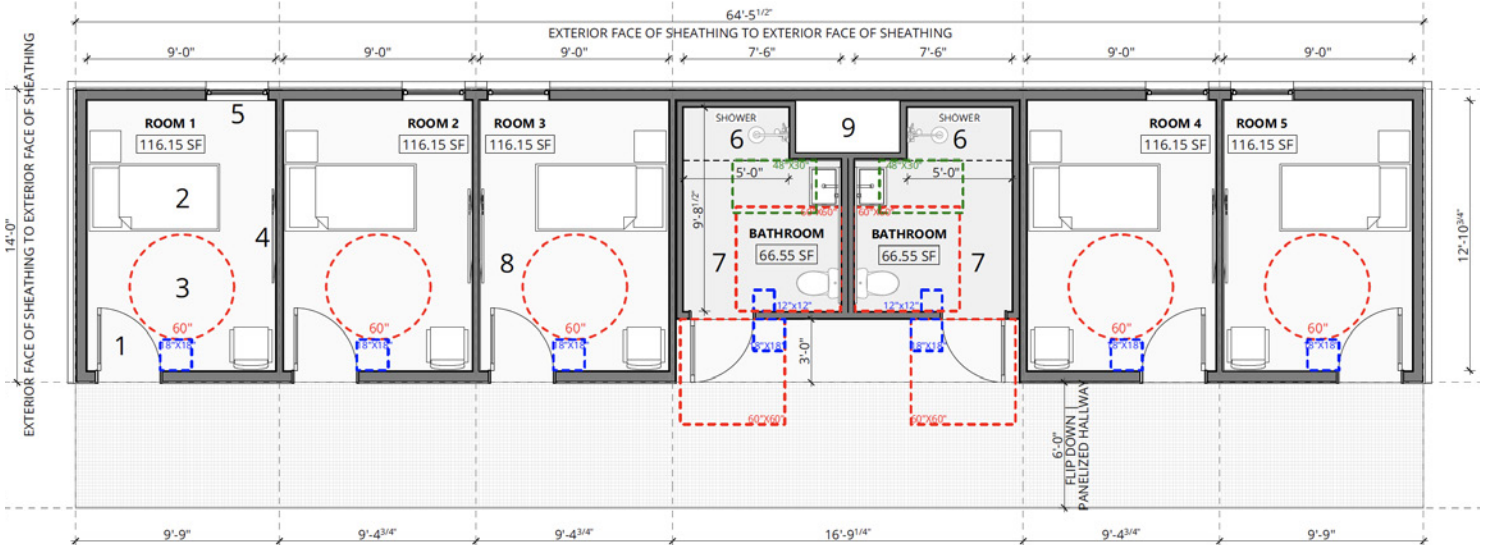
## Contact

Vaughan Buckley  
President  
Volumetric Building Companies  
vbuckley@vbc.co  
610 573 7219

Colby Swanson  
Partner  
Momentum Innovation Group  
colby@miginnovation.com  
551 200 1500

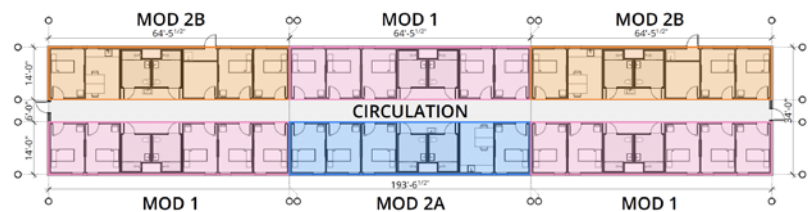
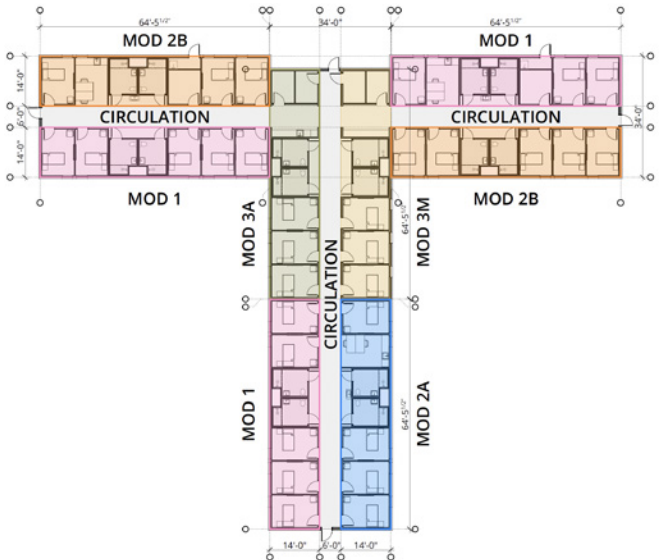
Tom Hardiman  
Executive Director  
Modular Building Institute  
tom@modular.org  
434 296 3288 x158

# SCU FLOORPLAN:

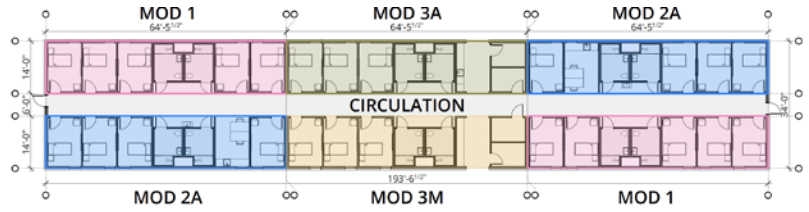


- 1. 3'-0" WIDE ENTRY DOOR
  - 2. FURNITURE SUITE (TWIN BED, SIDE TABLE, CHAIR)
  - 3. 5'-0" DIAMETER TURNING RADIUS
  - 4. TV LOCATION
  - 5. 3'-0" WIDE CASEMENT WINDOW PROVIDES 9 SF LIGHT; 4.5 SF VENTILATION
  - 6. TYPE A BATHROOM WITH BARRIER FREE SHOWER
  - 7. GFRG AT WET FLOOR SURFACES
  - 8. SHEET VINYL FLOORING
  - 9. UTILITY CHASE WITH ACCESS PANEL
- MODULE SF - 897 SF  
 TREATMENT | QUARANTINE ROOMS - 5  
 ACCESSIBLE BATHROOM - 2
- 6" EXTERIOR WALL WITH R19 CAVITY INSULATION, PLYWOOD SHEATHING AT EXTERIOR, GYPSUM WALLBOARD AT INTERIOR

# SCU POSSIBLE BUILDING LAYOUTS:



25 UNITS, 3 MONITORING STATIONS, 10 BATHS, 2 STAFF BATH, 1 CLEAN STORAGE, 1 SOILED STORAGE, FLEX STORAGE AND UTILITIES



24 UNITS, 4 MONITORING STATIONS, 10 BATHS, 2 STAFF BATH, 2 CLEAN STORAGE, 2 SOILED STORAGE, FLEX STORAGE AND UTILITIES

# SCU RENDERS:

