

ENERGY TRADING REAL TIME,

SHORT AND MEDIUM-TERM OPTIMISATION

THROUGH INNOVATIVE
WEATHER FORECASTING
SOLUTIONS

YOUR CHALLENGES



ANALYSING THE INFLUENCE OF WEATHER ON THE GAS AND ELECTRICITY TRADE



OPTIMUM ESTIMATION OF ELECTRICITY PRODUCTION FROM RENEWABLE ENERGY SOURCES



DIRECT MARKETING OF RENEWABLE ENERGY



OPTIMISATION OF SPOT MARKET FORECASTS



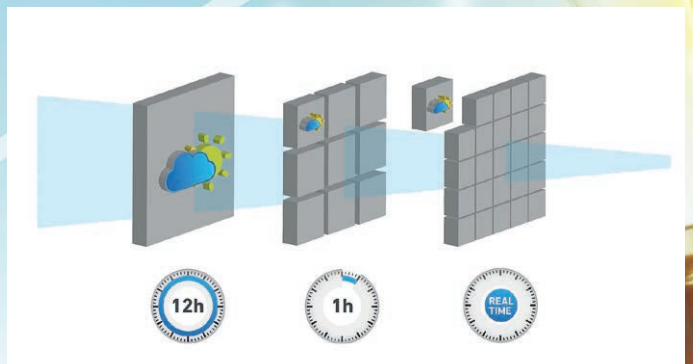
DEVELOPMENT OF NEW TRADING STRATEGIES

OUR SOLUTIONS



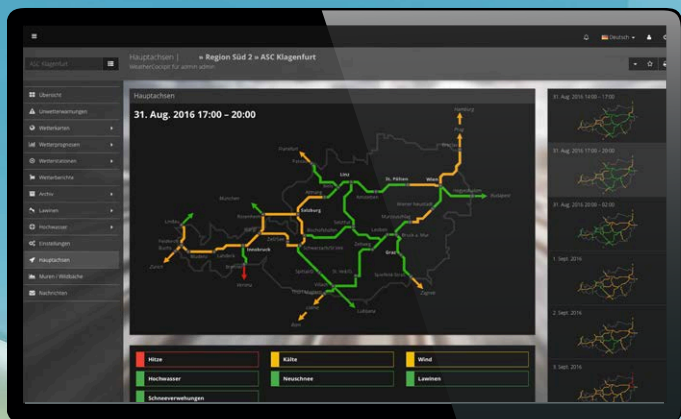
RENEWABLE ENERGY

- Highly precise wind, solar and hydropower forecasts
- One-of-a-kind feed-in management solutions
- Long-term comparison of wind and solar feed-in



WEATHER DATA

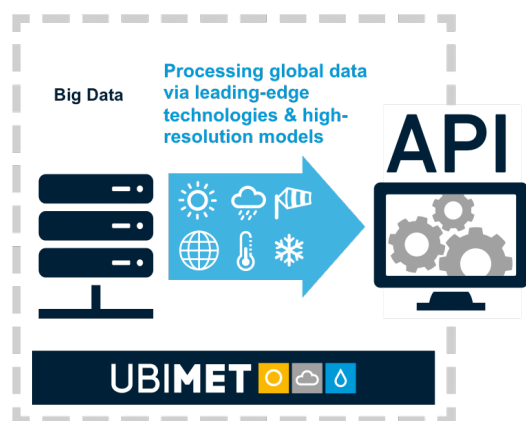
- Historical global measurements and climate time series
- Long-term meteorological energy re-analysis data covering many years
- Up-to-date measurements, satellite and radar images
- Concise lightning tracking system powered by nowcast
- Weather forecasts for locations, countries, grid regions and densely populated areas
- Precise weather analyses in real time (HYDRA)
- Dedicated, highly precise short-term weather model (RACE)
- Population weighted energy trading forecasts



WEATHER COCKPIT®

- Online representation of weather information
- Renewable energy and feed-in management forecasts
- Weather forecasts for locations and countries
- Real time weather analyses and model forecasts
- Live weather data (satellite and radar images, lightning)

- ✓ Pricing models: Optimisation thanks to highly precise weather, wind and solar forecasts
- ✓ Direct marketing: Minimisation of compensation energy costs thanks to highly precise portfolio forecasts (neural networks)
- ✓ Spot market forecasts: Optimisation thanks to high frequency forecast updates
- ✓ Speculative trade: Anticipation of price fluctuations thanks to innovative feed-in management solutions
- ✓ Data preparation for traders: well-structured online depiction in the Weather Cockpit®



DATA

- Unique and reliable data supply
- Via web interface or data feed
- All standard delivery options (incl. sFTP, API, e-mail)
- Flexible formats (incl. CSV, XML etc.)

CONTACT

GLOBAL HEADQUARTERS

UBIMET GmbH
ARES Tower
Donau-City-Straße 11
1220 Wien
Austria
T +43 1 263 11 22 0
E info@ubimet.com

GERMANY

UBIMET GmbH
Schönfeldstraße 8
76131 Karlsruhe
Germany
T +49 721 663 23 0
E germany@ubimet.com

AUSTRALIA

UBIMET Pty Ltd
Level 20, 350 Queen Street
Melbourne VIC 3000
T +61 3 8488 7610
E australia@ubimet.com

USA

UBIMET North America Inc.
81 Prospect St.
Brooklyn, New York 11201
T +1 1 646 690 4203
E usa@ubimet.com

ABOUT UBIMET

UBIMET is the leading weather service provider of the energy industry and one-stop shop for high-quality data, a proprietary lightning detection network, weather alerts and tailor-made meteorological solutions. The founder-led company with offices on three continents stands for reliable, highly precise weather information and digital information services for weather-dependent companies.

As a global innovation leader, top insurers and energy providers, infrastructure operators, media and sports companies to champions of the new economy place their trust in us. UBIMET offers high-quality meteorological data, forecasts and warnings which enable weather dependent industries around the globe to increase safety and efficiency.

www.ubimet.com

To accommodate the high demands of the energy industry, UBIMET offers:

INDUSTRY-SPECIFIC KNOW-HOW

- A center of excellence with 20 experts focused entirely on the energy sector in Karlsruhe
- 15 years of energy industry know-how and expertise
- R&D spending of 25% of annual revenue on international research projects in the areas of energy & mobility, smart cities as well as disaster management

HIGH PRECISION METEOROLOGY

- One of the world's largest weather data bases (weather stations, satellites, radar, proprietary lightning detection network)
- Access to the world's leading global weather models (including ECMWF and GFS)
- Self-developed, high resolution weather-analytical tool HYDRA (resolution up to 100 m)*
- Self-developed, high resolution local weather model RACE (resolution up to 100 m)
- In-house 24/7 severe weather center with experienced meteorologists
- Highly precise wind and solar power production forecasts
- Protected method for feed-in management (EinsMan) and volume forecasts**

LEADING EDGE IT INFRASTRUCTURE

- Four global data centers processing more than 90 TB of data per day (Big Data)
- Intuitive and state-of-the-art platform solutions with our Weather Cockpit®
- Full integration of weather data into customer IT systems via secure data transmission, sFTP-Server and cutting-edge API solutions

* The invention, on which our solutions is based, has been registered for patent (European patent application No. 17450001.7 as well as US Patent Application No. 15/860.189) by UBIMET.

** The invention was protected as utility model (DE 20 2017 100 343.4) and has been filed for patent (DE 10 2017 101 265.6, European patent application No. 18152474.5 as well as US patent application No. 15/879,326) by UBIMET. The invention was protected as utility model (DE 20 2017 100 343.4) and has been filed for patent (DE 10 2017 101 265.6, European patent application No. 18152474.5 as well as US patent application No. 15/879,326) by UBIMET.

GROUP MEMBERS

MeteoNews AG

Siewerdstrasse 105
8050 Zürich
Schweiz
T +41 43 288 40 50
E kontakt@meteonews.ch
www.meteonews.ch

nowcast GmbH

Albert-Roßhaupter-Straße 43
81369 Munich
Germany
T +49 89 552 97 13 70
E info@nowcast.de
www.nowcast.de