



## *My Builder*



Drawing from over 20 years of building industry experience, KirE Builders is one of the premier Southern California homebuilders, with highly regarded communities spread across San Diego County. KirE applies this wealth of knowledge to every home it constructs, ensuring that its customers receive the highest standards and attention to detail possible.

KirE Builders prides itself on building a wide variety of homes, from custom estate to urban developments. Its mission to adhere to customers' needs is an endless quest to build the perfect home, from selecting the land and designing the right architecture style that fits the location, down to the features offered, including the latest in technology.

At its foundation, KirE's goal is to build homes that go beyond quality craftsmanship and connect with its customers on a more personal level. KirE understands that each home is a sanctuary and strives to create the ultimate place to live a comfortable, easy lifestyle. This understanding ultimately provides customers with a home that will be a point of pride for years to come.

## *My Community*

Imagine travelling away from the hustle and bustle of the city on a short journey through rolling hills and sleepy countryside, through the quaint, rustic California mountain town of Ramona. Now imagine traversing up a quiet driveway into a small enclave of homes perched atop an expansive stretch of terrain with open sky and endless natural panoramas. Here you will find Black Canyon Estates, offering the finest points of a rural living lifestyle in one of the most picturesque settings in Southern California. Appointed with luxurious features, these semi-custom estate homes provide an everyday escape from city living with all of the modern amenities you need to live comfortably – and only a short drive from San Diego's main thoroughfares.

Settled in the foothills above San Diego, Ramona exudes small town charm while still providing all of the main necessities at a convenient drive from Black Canyon Estates. Main Street Ramona features shops ranging from locally owned bakeries to nationally recognized coffee houses, rustic antique shops to hardware stores, and a plethora of restaurants, all within a few minutes from your front door.

Focusing on the future, each home at Black Canyon Estates comes standard with a 3.0 kW solar system, powering your lifestyle while reducing your carbon footprint. A built-in pest defense system also comes standard, protecting your home in a safe and environmentally friendly manner.

Picture yourself perched high atop San Diego, looking over an endless view in your brand new, Black Canyon Estates home. You picked and tailored the plan to suit your lifestyle, designed and built your dream backyard, and have started enjoying the peace of country living without a long trek. Now is the time for you to make this dream a reality and start calling Black Canyon Estates "home".



O: 877.612.7465 x-101 • F: 858.433.4491

**BLACK CANYON ESTATES**

23041 Stokes Road • Ramona, CA 92065

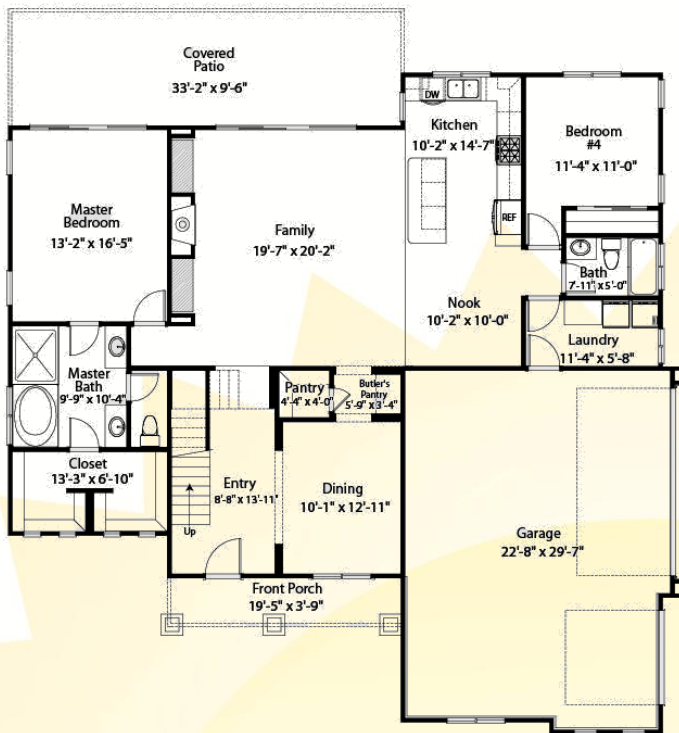
Another Fine Community by KirE Builders

# Fairmount

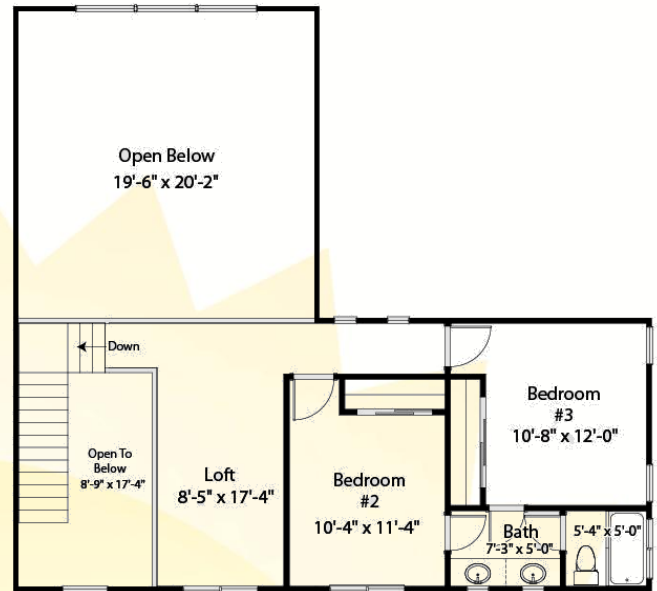


## FEATURES

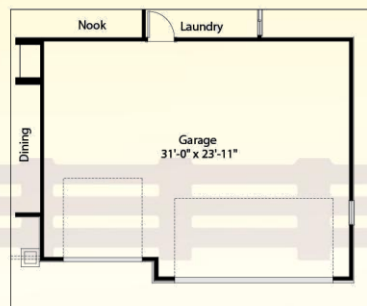
- 4 Beds / 3 Baths
- 2410 Sq. Ft. Living Area
- 76 Sq. Ft. Porch
- 315 Sq. Ft. Covered Patio
- 3-Car Garage
- 3.0kW Solar System Standard
- Built-In Pest Defense System
- 2+ Acre Lots
- Hiking Trails in Community
- Options Available



Lower Floor



Upper Floor



Optional Front Load Garage

[WWW.BCERAMONA.COM](http://WWW.BCERAMONA.COM)

\*The Developer, its agents, associate companies, and suppliers reserve the right to alter, modify or delete plans, specifications, and features without prior notice or obligation.