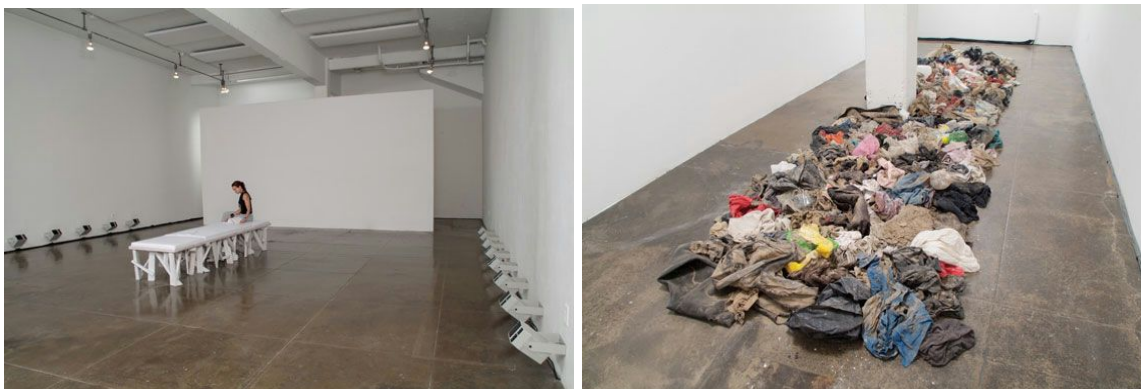


For Immediate Release

Contact: Tanya Diaz  
[tanya@atravesarte.com](mailto:tanya@atravesarte.com)  
+52-1-55-1962-0659

## Mexican Artist Luz Maria Sanchez Returns to San Antonio for Artpace 20th Anniversary

### *Iconic Immigration Installation Revisits Mexican Diaspora in Today's Context*



San Antonio, TX (September 10, 2015) --Renowned Mexican artist, Luz Maria Sanchez has returned to Texas for the twentieth anniversary of Artpace with the September 10 opening of her iconic exhibition, *diaspora*. The epic piece on immigration was created during her Artpace residency nine years ago to explore the social, economic and violent immigration crisis which continues to be relevant in today's context.

*diaspora* includes the haunting memorial sound piece, *2487*, a reading of the names of immigrants who did not survive the harrowing journey to cross the US border; and *riverbank*, a collection of muddied clothes and possessions abandoned on the banks of the Rio Grande. The show humanizes the US immigration debate and sheds light on current refugee crises across the globe.

"I am honored to be featured in this anniversary series. *diaspora* is still a timely work even though it was created nine years ago at a very different point in Artpace's history. Working on the complex issues of border politics was a shift in my own work, taking me to the practice at which I am now. This is still a conversation that can extend globally," explains Sanchez.

Sánchez, a Mexican-born United States resident, received the First Prize Award for the inaugural Biennial de las Fronteras in 2014 and in 2015 was awarded the prestigious national grant Sistema Nacional de Creadores de Arte by the National Institute of Arts and Culture in Mexico. As an artist, she employs both sound and the moving image to create a full sensory experience in order to feel the immediacy of political trauma. Her return to Texas continues with a show on September 18 at [She Works Flexible](#) in Houston with [detritus](#), an audiovisual installation raw data on the 2006-2012 war against drug trafficking in Mexico and its devastating results among civilians.

**Exhibition information:** *diaspora* opens on Thursday, September 10 from 6 pm - 9 pm in the Hudson (Show)Room of Artpace along with a Window Works exhibition by Texas favorite, Cruz Ortiz. Artpace, San Antonio is located at 445 North Main Avenue, San Antonio, Texas. The exhibition runs through January 3, 2016.

[luzmariasanchez.com](http://luzmariasanchez.com)

[artpace.com](http://artpace.com)

[sheworksflexible.com/upcoming-show/](http://sheworksflexible.com/upcoming-show/)

###