

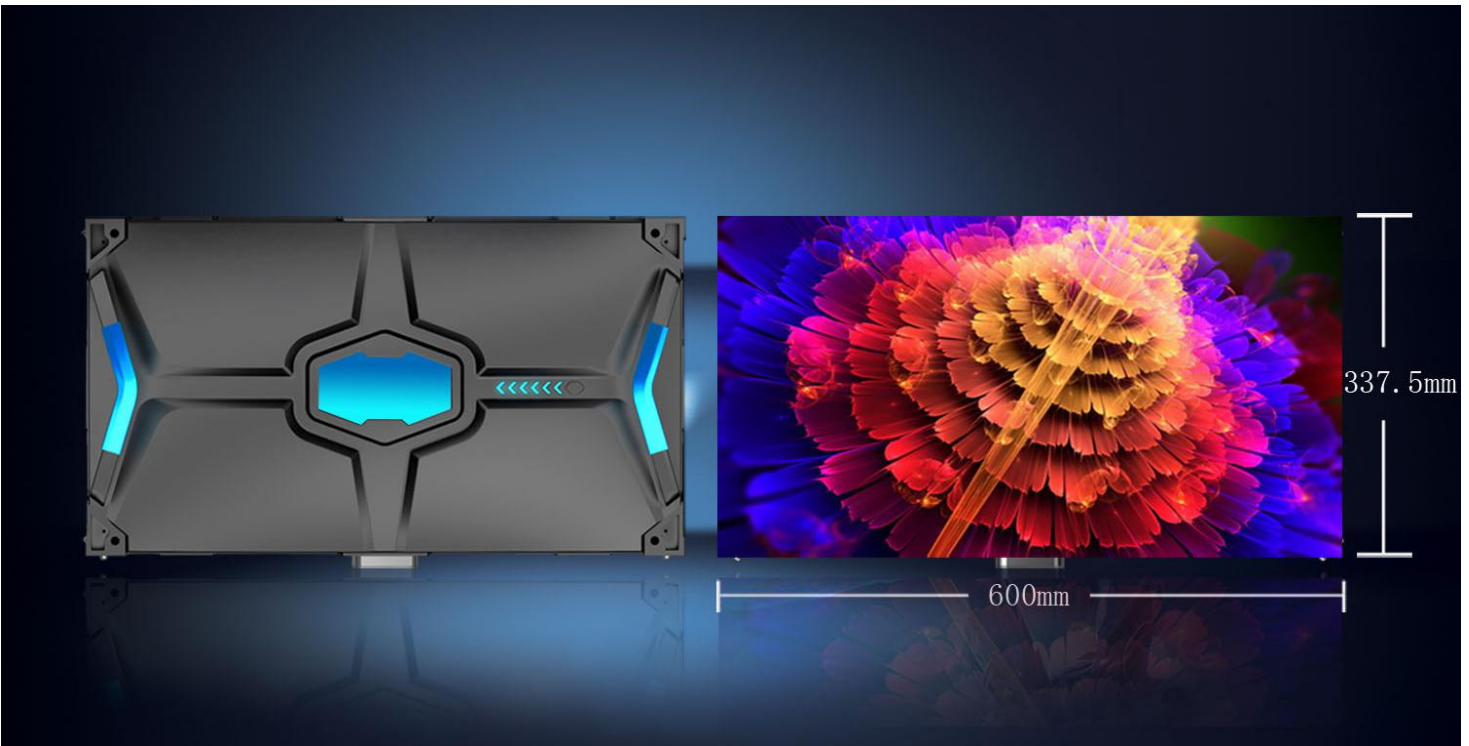
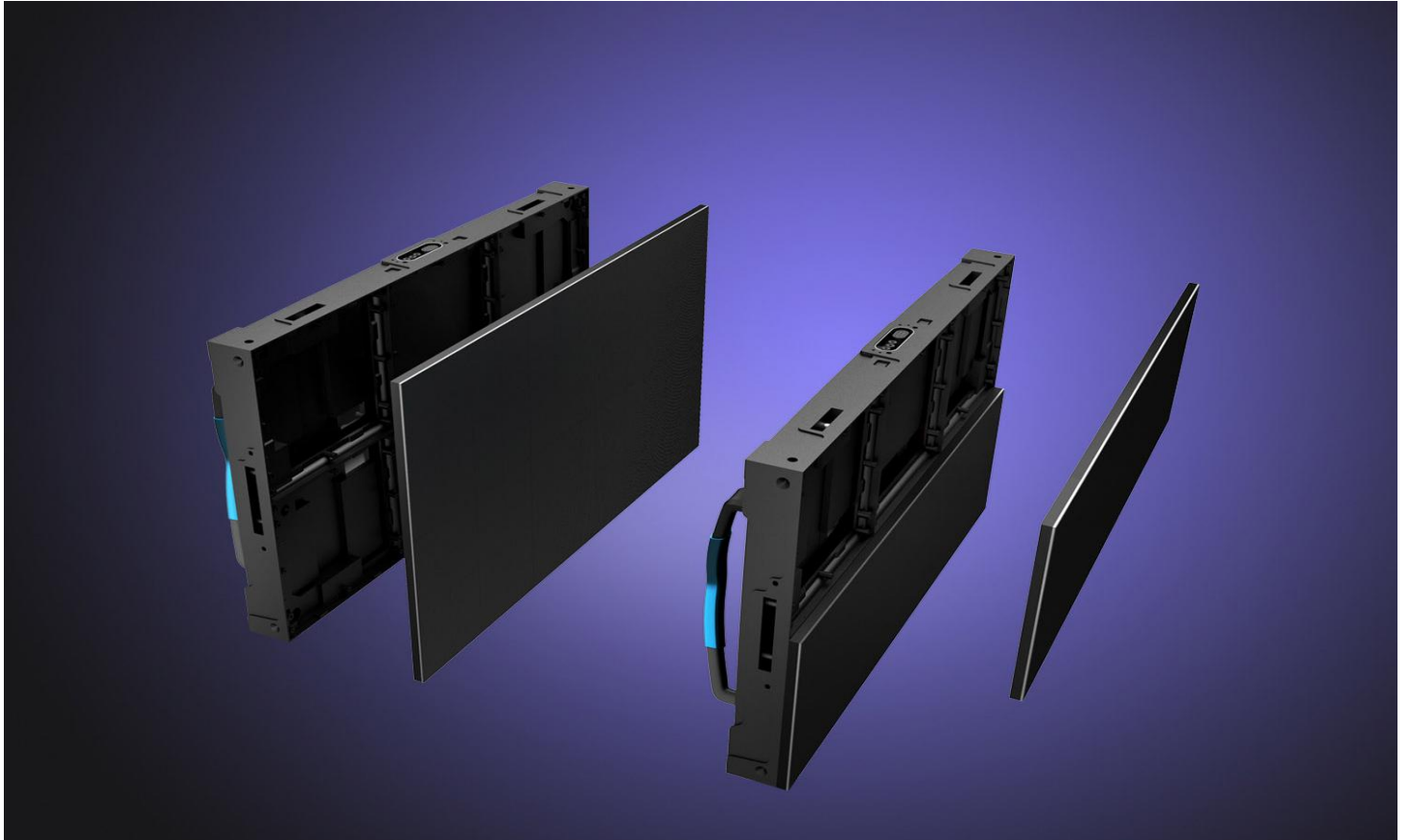


SHENZHEN YUCHIP LIGHTING CO.,LTD

Email: manager@yuchip.com

Website: www.yuchip-led.com

Fine Pixel LED Display





Features:

1. Die-Casting Aluminum Design

Adopting high strength die-casting aluminum materials, a integrated, by CNC precision machining, cabinet flatness achieve 0.01 mm grade.

2. No Gap, Looks Flat

Achieve seamless stitching feeling, complete picture, enjoy the perfect picture quality.

3. 16:9 Golden Division Ratio

It can be point to point spliced to the LED Display of standard 720P,1080P,2160P,3840P,etc.

4. Dual Backup Interface and Challenging All Possibilities

Supporting Dual Control System, Dual Power Supply backup, Autoatically Switch the Picture in an LED screen when it occurs any problems to make sure a stable and reliable image.

Light Like The Feather, Colorful Like The Painting:





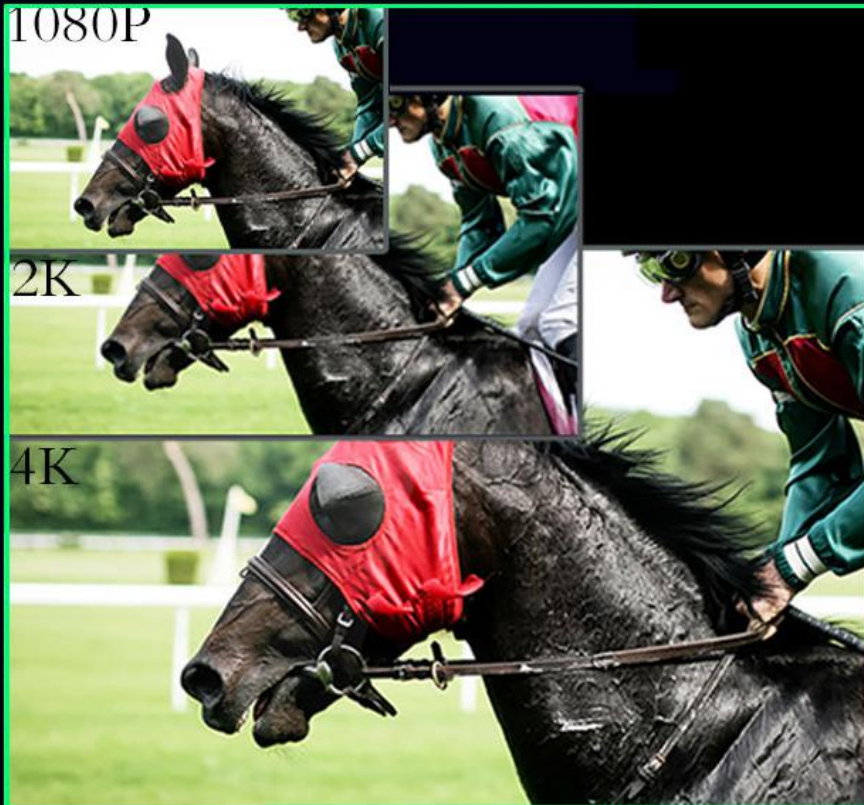
SHENZHEN YUCHIP LIGHTING CO.,LTD

Email: manager@yuchip.com

Website: www.yuchip-led.com

Ultra High Definition:

It delivers a truly amazing picture with extraordinary pixels producing an image that is HD quality in an LED Screen.



Application:





SHENZHEN YUCHIP LIGHTING CO.,LTD

Email: manager@yuchip.com

Website: www.yuchip-led.com



**Parameter:**

Pixel pitch (mm)	1.25	1.56	1.875	2.5
Pixel Configuration	SMD0808/1010			
Pixel density (dots/m ²)	640000	410897	286225	160000
Module resolution (W×H)	160*135	128*108	160*90	80*135
Module size (mm)	200(W)*168.75(H)			
Module weight (kg)	0.4			
Module of cabinet (W×H)	2*2			
Cabinet resolution (W×H)	480*270	384*216	320*180	240*135
Cabinet size (mm)	600 (W) × 337.5 (H) × 80 (D)			
Cabinet area (m ²)	0.2025			
Cabinet weight (kg)	7.8			
Cabinet level up degree(mm)	≤0.2			
Maintenance mode	Front			
Cabinet raw material	Die-casting aluminum			
White Balance Brightness (nits)	≥800 (6500K)			
Color Temperature (K)	3200—9300(adjustable)			
Viewing Angle(Horizontal / Vertical)	160/160			
Deviation of center distance of light - emitting	<3%			
Brightness / chroma uniformity	≥97%			
Refresh rate (Hz)	≥3840			
Number of color processing bits	16bit			
Video playback capabilities	2KHD, 4KHD			
Applicable standards	CCC, TUV-CE, ETL			